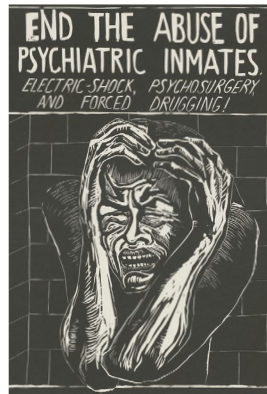
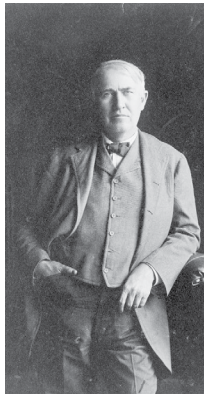


ACCESSING INQUIRY FOR STUDENTS WITH DISABILITIES THROUGH PRIMARY SOURCES:

LIBRARY OF CONGRESS TEACHING WITH PRIMARY SOURCES PROGRAM
AT THE COLLABORATIVE FOR EDUCATIONAL SERVICES (CES)

LIBRARY
OF CONGRESS
**TEACHING
WITH PRIMARY
SOURCES**
Consortium Member



“HOW CAN I SUPPORT ALL LEARNERS?”

Social Studies and Humanities pose distinct challenges for struggling learners, including extensive discipline-specific vocabulary, difficult informational texts—including complex primary sources, and a need for background knowledge. Yet the authentic sources, important ideas and connections to issues of these subjects also offer vital tools for differentiation and potent means to motivate students.

An exciting grad course from the Collaborative for Educational Services supports content instruction for Students with Disabilities in History-Social Studies and for Special Education teachers.

Grounded in more than a decade of practice by history educators, historians, and experts in Special Education, and based on current research and innovative classroom practices. Featuring models of best practices, employing primary sources and analysis tools.

- Gain and apply practical classroom strategies.
- Integrate **History of People with Disabilities** through issues of citizenship, private and government responsibility to provide services, and struggles for empowerment.
- Create/adapt lessons: Universal Design for Learning.

PRESENTERS:



Rich Cairn,
Director
Emerging America
Collaborative for Educational Services




Alison Noyes,
Assistant Director
Emerging America
Collaborative for Educational Services



Lia Atanat,
Professional Development Coordinator
Maryland Humanities

REGISTER ONLINE AT:

 **collaborative.org** /accessing-inquiry/disabilities
Collaborative for Educational Services



ONLINE COURSE

February 19 - April 2, 2021

Required online session on
February 23, 2021 from
7:00pm - 8:15pm EST

The course will run 2.5 hours per week plus additional reading. You may complete it at a convenient time for you. There will be one scheduled 60-minute webinar. (With option to watch recordings.) Each week will include a mix of readings, online activities, and video clips. You will write responses to prompts in a class forum, and reply to your classmates' posts. Over the six weeks, you will find and create a text set of primary sources and write a lesson plan that employs techniques of access for students with disabilities.

Cost: \$80.00

Massachusetts teachers get 22.5 PDPs. Meets MA DESE requirement of 15 hours of PD on teaching students with disabilities. Maryland teachers get 15 CPS through Maryland Humanities. Others get documentation of 15 hours. Optional 1 Grad Credit (Westfield State University) available for \$130.

For information & registration:

Alison Noyes
anoyes@collaborative.org

For program information, contact:

Rich Cairn
rcairn@collaborative.org
(413) 727-2238

Register by February 12, 2021.

For more information about teaching with primary sources:
loc.gov/teachers

 **Emerging America.org**

Images courtesy of Library of Congress.